



## CRAWFORD COUNTY PUBLIC HEALTH

PREVENT • PROMOTE • PROTECT

1520 ISAAC BEAL ROAD • BUCYRUS • OHIO • 44820

(419)562-5871

[www.crawfordhealth.org](http://www.crawfordhealth.org)

# Annual Report 2017



# MESSAGE TO OUR COMMUNITIES

## Message To Our Communities

Prior to 1919, each city, village, and township in Crawford County had their own separate Boards of Health. It was the 1919 Hughes-Griswold Act that created county and city health districts in response to the 1918 pandemic flu outbreak that caused more than one-half million deaths in the United States. The Hughes-Griswold Act of 1919 is considered a major accomplishment in public health by requiring Ohio's 2,158 city, village, and township health departments to focus efforts and combine into 88 county and 92 city health districts. Today, Crawford County Public Health is proud to serve the residents of one city, five villages, and sixteen townships.

We are excited about this opportunity to present agency highlights in our 2017 Annual Report. Along with our community partners, we strive to help create conditions that allow everyone to attain their full health potential regardless of their social position or other socially-determined circumstances.

In 2017 we continued to work on key health priorities identified by the most recent Crawford County Community Health Assessment: decreasing youth substance abuse, improving prenatal outcomes, improving cardiovascular health, and achieving a healthy weight.

Working in public health requires flexibility and the ability to adapt to the moment. While we never know what the day will bring us, or what the health department might be faced with, you can have confidence that you have a team of dedicated, compassionate, and capable people working for you. As you read through our annual report, we hope you are proud of the work and efforts reflected by your Crawford County Public Health staff.



2017 Crawford County Public Health Staff

# THIS IS PUBLIC HEALTH

## This is Public Health

This is just a snapshot of some of the services provided by your local health department in 2017.

**166 Families Supported**



**\$587,023.30** WIC dollars redeemed at local stores



**3,745** Immunizations



**455** Communicable Disease Investigations



**92** Naloxone Refills for Bucyrus, Crestline, Galion PD's, Crawford County Sheriff's office, and Holmes Twp. Fire Dept. to save lives



**1,668** Home Visits



**1,191** WIC Participants Monthly



**5** Bed Bug Classes



**17** Pack 'n Plays to families that did not have a safe place for their baby to sleep



**63** STD, **37** Hepatitis C, **55** HIV Tests, and **9** Pregnancy Tests Administered



**1,695** Hours of Food Safety



**1,032** Certified Birth Certificates

# 2017 REVENUE

## 2017 Revenue

### 2017 Revenue

#### Local Government Source Funds

|   |    |                   |   |
|---|----|-------------------|---|
| Township Subsidy                                      | \$ | 127,271.80        | (16 Townships, 5 Villages)  |
| Bucyrus City Contract                                 | \$ | 226,178.04        | (Bucyrus City payment to the Health Dept.)  |
| Passthrough (Subgrants from other health departments) | \$ | 136,050.41        | (Grants for Ebola, IAP, Central Coordination, Reproductive Health, SIDS Network & Early Intervention) |
| Other Local Government                                | \$ | 6,000.00          | (Solid Waste District revenue)  |
|   | \$ | <b>495,500.25</b> |   |

#### Personal Health Services Funds

|                                 |    |                   |  |
|---------------------------------|----|-------------------|--|
| Medicaid/Medicaid Managed Care  | \$ | 24,985.45         | (Molina, Paramount, Caresource, Medicaid etc.) |
| Medicare Reimbursement          | \$ | 5,745.39          | (Medicare)                                     |
| Private Insurance Reimbursement | \$ | 206,423.77        | (Anthem, Blue Cross/Blue Shield etc.)          |
| Patient Fees                    | \$ | 13,421.36         | (client paid)                                  |
| Health Promotion Fees           | \$ | 180.00            | (Car Seat Classes)                             |
|                                 | \$ | <b>250,755.97</b> |  |

#### Environmental Health Services

|                                    |    |                   |   |
|------------------------------------|----|-------------------|---|
| Campgrounds                        | \$ | 3,504.50          | (licenses)  |
| Food Service                       | \$ | 66,871.46         | (licenses)  |
| Manufactured Home Parks            | \$ | 4,950.00          | (reimbursed by OMHC for inspecting the Crawford & Marion County MHP's)  |
| Private Water Systems              | \$ | 22,215.61         | (permit fees & water samples)   |
| Household Sewage Treatment Systems | \$ | 28,475.71         | (permit fees)   |
| Solid Waste/ C&DD                  | \$ | 110,059.34        | (The landfill license is \$60,000, of which \$57,500 is forwarded to Ohio EPA. C&DD funds get forwarded to the County Commissioners, Liberty & Whetstone Townships) |
| Public Swimming Pools/Spas         | \$ | 4,210.36          | (licenses)  |
| Commercial Plumbing                | \$ | 641.00            | (contracted with Richland Public Health to conduct commercial plumbing inspections, of which we receive 10% of the fees)  |
| Tattoo/Body Piercing               | \$ | 240.93            | (licenses)  |
|                                    | \$ | <b>241,168.91</b> |   |

|                              |    |                  |   |
|------------------------------|----|------------------|---|
| <b>Vital Statistics Fees</b> | \$ | <b>55,799.99</b> | (includes fees collected for the state) |
|------------------------------|----|------------------|---|

# 2017 REVENUE

## Locally Funded Projects & Contracts

|  |                      |   |
|--|----------------------|---|
| Jail Nursing Contract & Council on Aging | \$ 78,310.86         | (Nursing services at the jail average 35 hours per week and Council on Aging is one day per week)           |
| School Nursing                           | \$ 170,329.92        | (Buckeye Central, Bucyrus City, Colonel Crawford, Crestline Village, Crestline St. Joe's & Wynford Schools) |
|  | <b>\$ 248,640.78</b> |   |

|                  |                    |   |
|------------------|--------------------|---|
| <b>Donations</b> | <b>\$ 2,302.00</b> | (Monetary donations provided to Help Me Grow for program support) |
|------------------|--------------------|---|

## Misc. Income

|   |                    |  |
|---|--------------------|--|
|   |                    |  |
| Immunization Records Requests                     | \$ 384.00          |  |
| Vaccine Rebate                                    | \$ 2,064.22        |  |
| Copier Cost Reimbursement                         | \$ 5.00            |  |
| Audiometer Calibration Reimbursement              | \$ 501.50          |  |
| County Level Coalition Coordination Reimbursement | \$ 4,000.00        |  |
| Reimbursed Mileage for Accreditation Meeting      | \$ 62.50           |  |
| Molina Survey Completion                          | \$ 150.00          |  |
|   | <b>\$ 7,167.22</b> |  |

## State Revenue Sources

|  |                      |   |
|--|----------------------|---|
| State Subsidy                                | \$ 6,245.38          | (received from Ohio Dept. of Health based on 0.17 cents per person in jurisdiction)   |
| <b>Ohio Dept. of Health Funded Projects:</b> |                      |   |
| State Funded                                 | \$ 353,599.04        | (Grants through ODH for Home Visiting (up to age 3) Program, Children with Medical Handicaps Program, Septic Grant)                                       |
| Federal Funded                               | \$ 536,792.37        | Grants through ODH for WIC, MIECHV (home visiting up to age 5), PHEP (emergency preparedness) Accreditation Efforts for CHIP, and MAC (Medicaid Claiming) |
| <b>Total State Revenue for 2017</b>          | <b>\$ 890,391.41</b> | (monies received during the calendar year)  |
| <b>Federal Funds for 2017</b>                | <b>\$ 0</b>          |   |

|                                    |                        |
|------------------------------------|------------------------|
| <b>2017 Combined Total Revenue</b> | <b>\$ 2,197,971.91</b> |
|------------------------------------|------------------------|

# 2017 REMITTANCES AND EXPENSES

## 2017 Remittances and Expenses

### 2017 Expenditures

#### Remittances

|  |           |                   |
|--|-----------|-------------------|
| Ohio Dept. of Health                       | \$        | 9,577.00          |
| Ohio EPA                                   | \$        | 87,733.01         |
| Ohio Dept. of Agriculture                  | \$        | 1,204.00          |
| Ohio Div. of Real Estate                   | \$        | 567.50            |
| Ohio Department of Natural Resources       | \$        | 648.00            |
| Crawford County Commissioner's             | \$        | 1,711.31          |
| Liberty Township                           | \$        | 912.70            |
| Whetstone Township                         | \$        | 1,369.04          |
| Ohio Dept. of Health Vital Statistics Fees | \$        | 27,989.20         |
| <b>Total Remitted Fees</b>                 | <b>\$</b> | <b>131,711.76</b> |

#### Expenses by Source of Funds (includes Personnel Costs)

|   | Local         | State         |
|---|---------------|---------------|
| WIC (grant)                               | \$ -          | \$ 277,390.91 |
| Help Me Grow (grant)                      | \$ -          | \$ 367,813.18 |
| MIECHV (grant)                            | \$ -          | \$ 46,502.24  |
| BCMH (state program)                      | \$ -          | \$ 27,944.08  |
| HIV Prevention                            | \$ 458.29     | \$ -          |
| Immunizations - adult                     | \$ 39,067.17  | \$ -          |
| Immunizations - pediatric                 | \$ 189,185.31 | \$ -          |
| STD Prevention                            | \$ 595.26     | \$ -          |
| TB Prevention and Control                 | \$ 1,022.82   | \$ -          |
| Vision and Hearing Screenings             | \$ 7,348.48   | \$ -          |
| Injury Prevention                         | \$ 2,251.18   | \$ -          |
| Infant Mortality/Preterm Birth Prevention | \$ -          | \$ 500.00     |

#### Environmental Health Services

|                                     | Local        | State         |
|-------------------------------------|--------------|---------------|
| Campgrounds                         | \$ 1,784.84  | \$ -          |
| Food Service                        | \$ 54,453.88 | \$ -          |
| Manufactured Home Parks             | \$ 2,785.11  | \$ -          |
| Private Water Systems               | \$ 12,487.00 | \$ -          |
| Household Sewage Treatment Systems  | \$ 15,522.64 | \$ -          |
| Solid Waste/C&DD                    | \$ 12,192.68 | \$ -          |
| Swimming Pools/Spas                 | \$ 2,664.22  | \$ -          |
| HSTS Repair/Replacement Grant       | \$ -         | \$ 100,305.84 |
| Lab Expenses (Environmental Health) | \$ 2,477.27  | \$ -          |

# 2017 REMITTANCES AND EXPENSES

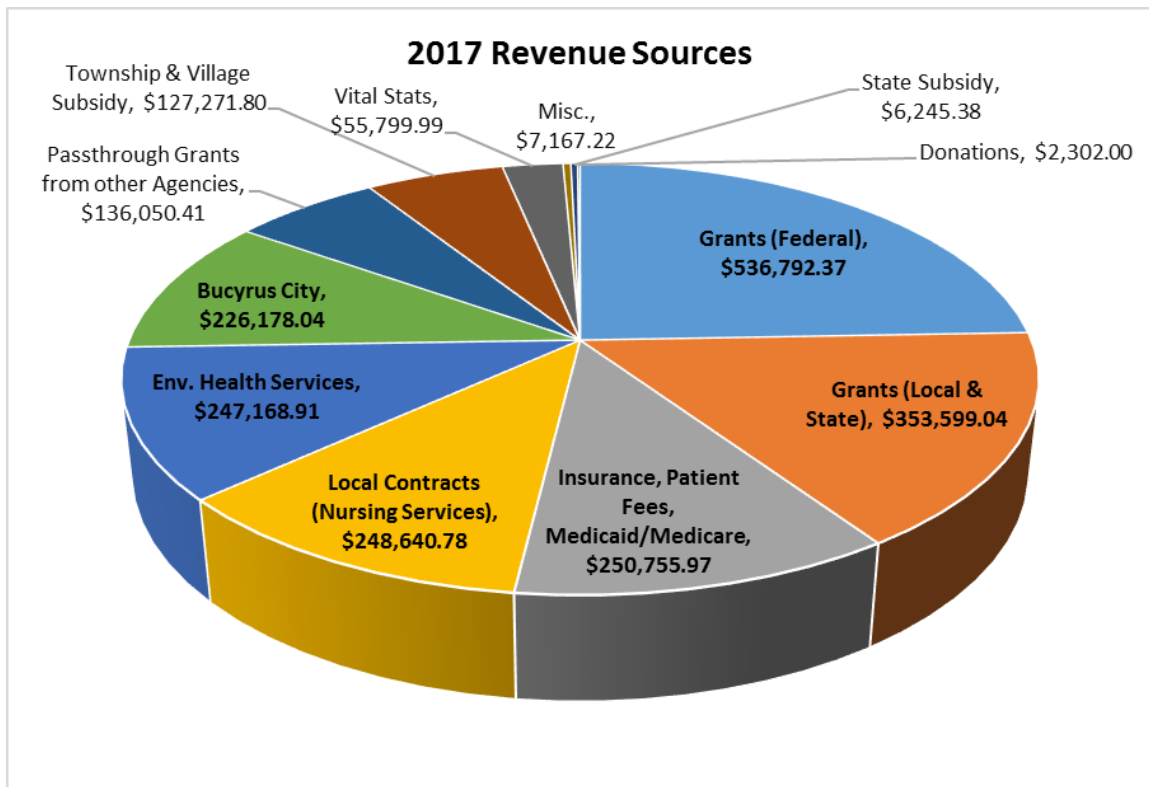
## Admin, Vital Stats, Accreditation & Epi Services

|                              |    |            |    |           |
|------------------------------|----|------------|----|-----------|
| General Administration       | \$ | 394,364.54 | \$ | -         |
| Vital Statistics             | \$ | 14,622.36  | \$ | -         |
| Accreditation                | \$ | 50,808.28  | \$ | -         |
| Epidemiology                 | \$ | 17,000.00  | \$ | -         |
| Communicable Disease Control | \$ | 12,721.76  | \$ | -         |
| Emergency Preparedness       | \$ | -          | \$ | 64,962.66 |

## Public Health Nursing Services

|                                     |    | Local               | State                |
|-------------------------------------|----|---------------------|----------------------|
| Nursing Services (Clinical)         | \$ | 94,316.04           | \$ -                 |
| School Nursing Services             | \$ | 117,150.86          | \$ -                 |
| Nursing Services - Council on Aging | \$ | 8,777.81            | \$ -                 |
| Nursing Services - Jail             | \$ | 58,179.75           | \$ -                 |
| Franklin County Ebola Grant         | \$ | 1,201.58            | \$ -                 |
| IAP Grant                           | \$ | 4,122.40            | \$ -                 |
| Nursing Services - Lead Program     | \$ | 842.59              | \$ -                 |
|                                     | \$ | <b>1,118,404.12</b> | <b>\$ 885,418.91</b> |

**Total 2017 Expenditures \$ 2,135,534.79**



# WIC DIVISION REPORT

## WIC Division Report

WIC, a special Nutrition Program for Women, Infants, and Children (WIC), is a public health nutrition program under the USDA providing nutrition education, nutritious foods, breastfeeding support and healthcare referrals for income-eligible women who are pregnant or post-partum, infants, and children up to age 5 who are at nutritional risk.

### Proven Track Record:

- ✓ Improves pregnancy outcomes by providing or referring to support services necessary for full-term pregnancies
- ✓ Reduces infant mortality by reducing the incidence of low birth weight (infants under 5 1/2 pounds are at greater risk of breathing problems, brain injuries and physical abnormalities)
- ✓ Provides infants and children with a healthy start in life by combating poor and/or inadequate diet

The nutrition change at WIC this past year was the addition of whole grain pasta under the whole grain benefit. The WIC division continues to grow a small garden to enhance their nutrition education. All produce harvested becomes available for clients, along with recipes, to encourage them to incorporate fresh fruits and vegetables into their meal planning.



In August 2017 the WIC Division, in partnership with Avita Health System, hosted a Baby Shower for all Crawford County Pregnant Women. One of the highlights for the shower this year was every Pregnant Mom-to-Be received a handmade quilt donated and made by the New Washington Community Quilters.

## 2017 Women Infants and Children (WIC) Program Data

**\$264,583.37**

Grant Dollars Spent  
(January–December)

**1,191**

Participants monthly

**1,951**

Average store  
transactions per  
month

**\$587,023.30**

2017 WIC Dollars  
redeemed at five  
Crawford County  
stores  
(Wal-Mart, Kroger,  
Save-A-Lot, Geysers &  
Drug Mart)



# WIC DIVISION REPORT

Breastfeeding initiation rates for 2017 (58%) were slightly higher than 2016 rates (56.5%).

As part of WIC's community support for breastfeeding moms, and in collaboration with Avita Health System, in July 2017 we began to offer breastfeeding support meetings on a monthly basis. Every third Friday, from 1:00-2:00pm, our conference room hosts the Sprouts program.

The 2018 Sprouts dates are:

- January 19
- February 16
- March 16
- April 20
- May 18
- June 15
- July 20
- August 17
- September 21
- October 19
- November 16
- December 21



## PREGNANT AND NEW MOM'S sprouts LEARNING GROUP

Many new and soon-to-be new moms have questions about breastfeeding which include:

- What to expect in the first few weeks and beyond
- Common breastfeeding difficulties
- Your career and breastfeeding

Join Deanna Grube, Certified Lactation Consultant, for a "Sprouts" question and answer session about breastfeeding. Open to all new mothers

**Galion group location**  
DR. TYLER HUGGINS OFFICE,  
1200 STATE ROUTE 598, GALION,  
BASEMENT MEETING ROOM

**Bucyrus group location**  
CRAWFORD COUNTY HEALTH DEPARTMENT,  
1520 ISAAC BEAL RD. BUCYRUS,  
CONFERENCE ROOM

06-07-2017

### Galion 2017 Meeting Schedule:

(1<sup>st</sup> Friday of every month)

- February 3
- March 3
- April 7
- May 5
- June 2
- July 7
- August 4
- September 1
- October 6
- November 3
- December 1

### Bucyrus 2017 Meeting Schedule:

(3<sup>rd</sup> Friday of every month)

- July 21
- August 18
- September 15
- October 20
- November 17
- December 15

1:00 to 2:00 pm



## HOW THE WIC PROGRAM HELPS

WIC promotes breastfeeding as the optimal infant feeding choice.

### THE WIC PROGRAM PROVIDES

Breastfeeding Peer Counselors



Lactation Consultants



Classes & Support Groups



Educational Materials



Hotlines for Questions



### BREASTFEEDING INITIATIVES

# HELP ME GROW/EARLY INTERVENTION DIVISION

## Help Me Grow/Early Intervention Division



**Help Me Grow Home Visiting** is a voluntary family support program for pregnant women or new parents. Help Me Grow (HMG) is an evidence-based program that promotes healthy growth and development for babies and young children through age two. Whether it is how to soothe a crying baby, how to manage sleep or how to deal with the stresses of parenting, home visitors are there to listen to parents, answer their question and provide reliable information on topics that concern them.



*Helping children and families wherever they choose to live, play, and spend their day.*

### Early Intervention

**Early Intervention** services provide supports and resources to assist parents and caregivers of children with disabilities to enhance their children's learning and development through everyday routines. There are no income requirements for this program. CCPH Service Coordinators guide parents through the eligibility process and help develop a service plan with the parent(s) and the Early Intervention team at Fairway School (Developmental Specialists, Occupational Therapist, Physical Therapist and Speech Therapist). Services are voluntary and are funded through state and federal funds.

2017 once again brought changes in our programs and services. Due to financial and staffing issues in June we transferred our Healthy Families grant to Marion County Help Me Grow. We have tried to make the transition as seamless as possible. The families are invited to our Family Connections meetings each month and we are in regular contact with Marion County to refer families and coordinate services.

One of the financial challenges of operating the grant, was paying affiliation fees to two entities, Parents As Teachers and Healthy Families America (HFA). In follow up conversations with Ohio Department of Health (ODH) and their current affiliation with HFA, our staff are currently in the process of becoming affiliated with HFA. Once completed, we hope to expand our service area.



# HELP ME GROW/EARLY INTERVENTION DIVISION

## 2017 Program Data

**1,668**  
Home Visits

**324**  
Referrals Received

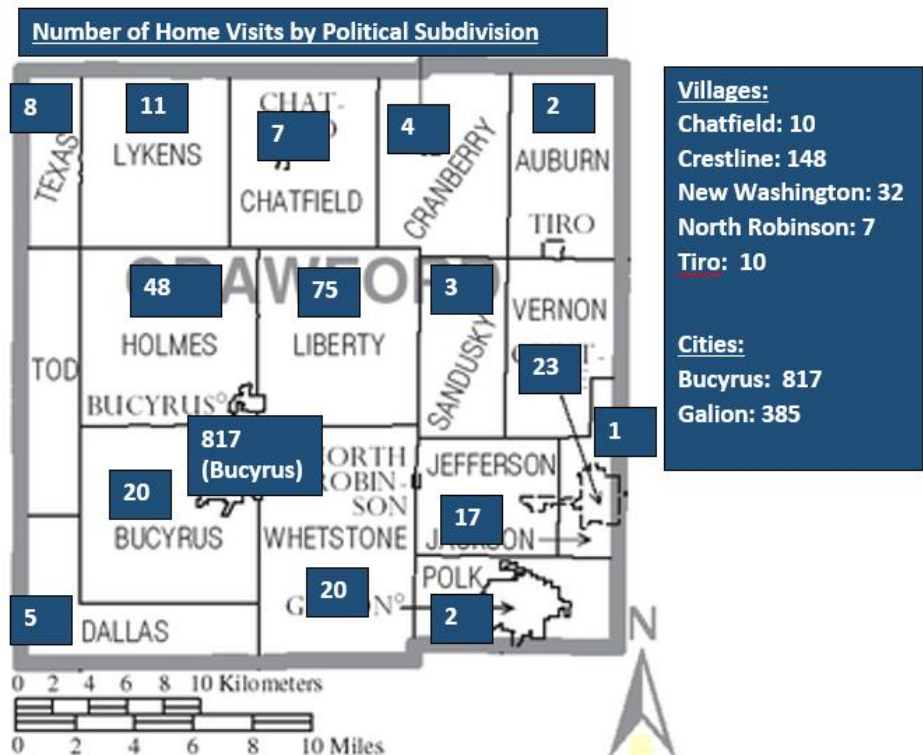
**212**  
Crawford County  
Children Served

**15**  
Community Events  
for Families

**17**  
Pack 'n Plays  
Distributed to  
Families that did not  
have a safe place for  
baby to sleep  
(Partnered with the  
WIC Division)

In August, ODH launched a state wide Central Intake system. The grant was awarded to one entity in Cleveland. Prior to this, county Help Me Grow agencies received funding to promote program services and process their own referrals. Due to the Central Intake system not living up to expectations, ODH sent out a competitive bid much earlier than expected. Although we have continued to receive referrals in Early Intervention, the only Home Visiting referrals we have received are the ones we have obtained ourselves by continuing our own central coordination efforts.

Due to the staff's outstanding efforts in this area, in December, we increased our capacity from 80 to 100 children. This is an amazing accomplishment given our small county population. No other county our size is serving that many children in the program.



# DONORS & VOLUNTEERS

## Donors & Volunteers

**Thank you** to all that donated throughout 2017 to help support our programs and our community!

|                                  |  |   |
|----------------------------------|--|---|
| GE Local 84704/General Electric  | Crawford County Board of DD/Fairway School   | Family & Children First Council           |
| Bucyrus United Methodist Church  | Chatfield Evangelical Pietist Church and Members (Lynn Utz, Gloria Nelson, Sarah Kalb) | Crawford Reads 20 Amvets Post 27, Bucyrus |
| Melmore Mothers Bobby Gardner    | Brittany Yancey  | YWCA Child Care Resource & Referral       |
| Jeanette Smackel                 | Sarah Kalb   | Dr. McMurray & Dr. Sackett Dental Office  |
| Woodlawn United Methodist Church | Becky Barr   |   |
| Galion LLC                       | Jaynie Eisenhart   |   |

## FOOD SAFETY AWARD WINNERS

The food licensing year runs from March 1 – February 28. In April, after final review of the violation statistics for licensed food operations within our jurisdiction, the Environmental Health Division determined the winners for a Food Safety Award. Eligibility for this award is only open to Class 3 and Class 4 food operations who meet the following criteria:

- (1) 0 Critical and 0 Non-Critical Violations for the entire year for a Superior Award.
- (2) 0 Critical and 3 or fewer Non-Critical Violations for the entire year for an Excellent Award.

We ended the 2016 licensing year with 35 winners of a food safety award!

| <b>SUPERIOR AWARD WINNERS</b>      | <b>EXCELLENT AWARD WINNERS</b> |
|------------------------------------|--------------------------------|
| Altercare                          | Arby's                         |
| Aumiller Park                      | Bob Evans                      |
| Buckeye Central School             | Bucyrus Hospital               |
| Bucyrus Elementary                 | Crestline Nursing Home         |
| Bucyrus Little League Stands 1 & 2 | Crestline Pool                 |
| Carolyn's Kitchen                  | Domino's Pizza                 |
| Chatfield Grocery                  | Freezer Fresh                  |
| Council on Aging                   | Inn at Orchard Park            |
| Crestline Child Care               | Katering Kountry Style         |
| Crestline Jr. Baseball             | Maplecrest                     |
| Daily Scoop                        | Morning Glory Bakery           |
| Dairy Crest                        | Pelican Coffee House           |
| Frank's Treat Time                 | St. Joseph Convocation Center  |
| Hannah-William Crawford School     | Trillium Event Center          |
| KFC [Galion/Polk Twp.]             | Wagon Wheel Campground         |
| Little Athens                      |                                |
| The Oak's Café                     |                                |
| Walmart                            |                                |
| Wynford Elementary                 |                                |

# ENVIRONMENTAL HEALTH DIVISION REPORT

**200**

Food Licenses

**1,695**

Total hours spent in the food safety program

**84**

Animal Bites Investigated

**60**

Septic System Inspections

**52**

Water Samples

**30**

Manufactured Home Park Inspections

**27**

Pool Inspections

**25**

School Inspections

**13**

Campground Inspections

**2**

Body Art Facility Inspections

## Environmental Health Division Report

This year's report highlights two of our main enforcement programs and provides statistics on our enforcement and compliance rates in conducting these programs.

The Food Program Statistics indicate the number of inspections conducted by the Environmental Health Division, the total number of critical and non-critical violations noted during inspections, and the most common critical violations noted during inspections. The statistics focus on the numbers of critical violations for these are the issues in a food operation that have the greatest effect on public health.

Foods held at improper temperatures for a long enough timeframe, or even foods at proper temperature but held for too long of a timeframe, can lead to increased growth of harmful pathogens that can cause food-borne illness. All critical violations, no matter what category, are taken seriously by our division and are required to either be corrected during the inspection, if possible, or within a set time-frame as agreed upon by the inspector and the food operator. Our department obtains strong compliance with correction of critical violations with most being corrected during the inspection and the remaining be corrected within an established correction time frame.

Non-critical violations are important to the proper operation of a food establishment, however they have more minimal effects on food safety (examples: certain cleaning issues, structural deficiencies, etc.). With this data, our office can focus efforts on increased food safety and proper food facility operation education.

### FOOD PROGRAM STATISTICS

| Year | #<br>INSPECTIONS<br>CONDUCTED | MOST COMMON CRITICAL VIOLATIONS |                 |             | TOTAL<br>CRITICAL<br>VIOLATIONS | TOTAL<br>NON-<br>CRITICAL<br>VIOLATIONS |
|------|-------------------------------|---------------------------------|-----------------|-------------|---------------------------------|---|
|      |                               | Temperatures                    | Date<br>Marking | Handwashing |                                 |   |
| 2017 | 250                           | 18                              | 18              | 2           | 61                              | 420                                     |
| 2016 | 250                           | 16                              | 13              | 1           | 47                              | 512                                     |
| 2015 | 256                           | 25                              | 6               | 6           | 47                              | 434                                     |

The Nuisance Program statistics indicate the number of nuisances received, the type of complaints received and whether the complaints were abated or referred to the Crawford County Prosecutor for further action. The 2017 statistics were compared with the previous two years to determine if any patterns or trends appeared.

# ENVIRONMENTAL HEALTH DIVISION REPORT

In comparing the three years, the number of complaints received greatly increased from 2015 into 2016 and 2017. The most common complaint for all three years was accumulations of garbage and trash. The number of complaints that we actually had to refer to the county prosecutor remained steady throughout the years. Once referred to the county prosecutor, we usually obtain compliance and are able to abate those cases. Overall, the Environmental Division is usually successful in responding to nuisance complaints within a reasonable time frame and obtaining compliance with correction of the nuisance conditions without further legal action by the county prosecutor.

| NUISANCE PROGRAM STATISTICS |                       |                |        |       |        |                        |
|-----------------------------|-----------------------|----------------|--------|-------|--------|------------------------|
| Year                        | # COMPLAINTS RECEIVED | COMPLAINT TYPE |        |       | ABATED | REFERRED TO PROSECUTOR |
|                             |                       | Garbage        | Sewage | Water |        |                        |
| 2017                        | 25                    | 18             | 7      | 0     | 16     | 3                      |
| 2016                        | 27                    | 23             | 4      | 0     | 24     | 1                      |
| 2015                        | 9                     | 7              | 2      | 0     | 7      | 2                      |

For several years our office has participated in Ohio EPA Water Pollution Control Loan Fund grants that provide 50-100% funding of failing septic systems. The 2016 grant cycle officially ended on November 30, 2017. Our focus was on Oceola for the 2016 grant and we were able to replace 5 systems in that community. The remainder of the 2016 monies were opened to the entire county with 2 additional systems in the Village of Tiro benefitting from the funding. We are currently in the 2017 county-wide grant and already have 10 properties eligible for funding. We hope to spend the entire \$300,000 awarded to us for this grant cycle.

In November 2017 our office made application to Ohio EPA for county-wide funding for the 2018 grant cycle and we have been notified that we have been awarded the maximum available: \$200,000. We ask that if you know of residents in your townships with failing septic systems that might benefit from our funding, please have them contact our office.

| HOUSEHOLD SEWAGE TREATMENT REPAIR/REPLACEMENT PROGRAM |                       |                    |                                     |              |       |
|---|-----------------------|--------------------|-------------------------------------|--------------|-------|
| Grant Year  | GRANT MONIES RECEIVED | GRANT MONIES SPENT | NUMBER OF SYSTEMS REPAIRED/REPLACED | SYSTEM TYPES |       |
|   |                       |                    |                                     | CONVENTIONAL | NPDES |
| 2016  | \$132,000             | \$92,752.48        | 7                                   | 0            | 7     |
| 2017  | \$300,000             | \$0.00             | 10 in Process                       | 0            | 0     |
| 2018  | \$200,000             | \$0.00             | 0 (to date)                         | 0            | 0     |

# PUBLIC HEALTH NURSING

## Public Health Nursing

The Public Health Nursing Division works to promote and protect the health of Crawford County residents through a variety of initiatives. The following services are provided by the Nursing Division:

- Communicable Disease Investigation
- Child & Adult Vaccines
- CMH (Children with Medical Handicaps) Home Visiting and Coordination of Care
- Jail Nursing at the Crawford County Justice Center
- School Nursing for six of our local schools
- Car Seat Safety Classes
- Lead Testing Program
- Sexual Health Clinic
- Tuberculosis Testing and Follow-Up
- Head Lice Screening
- Council on Aging Supervisory Home Visits
- Foster Care Visual Exams
- Referrals for Coordination of Care

**3,745**

**Immunizations  
provided to 1,636  
clients**

**881**

**Children with  
Medical Handicaps  
Contacts**

**455**

**Communicable  
Disease  
Investigations**

**1,180**

**Sick Visits for Jail  
Inmates**

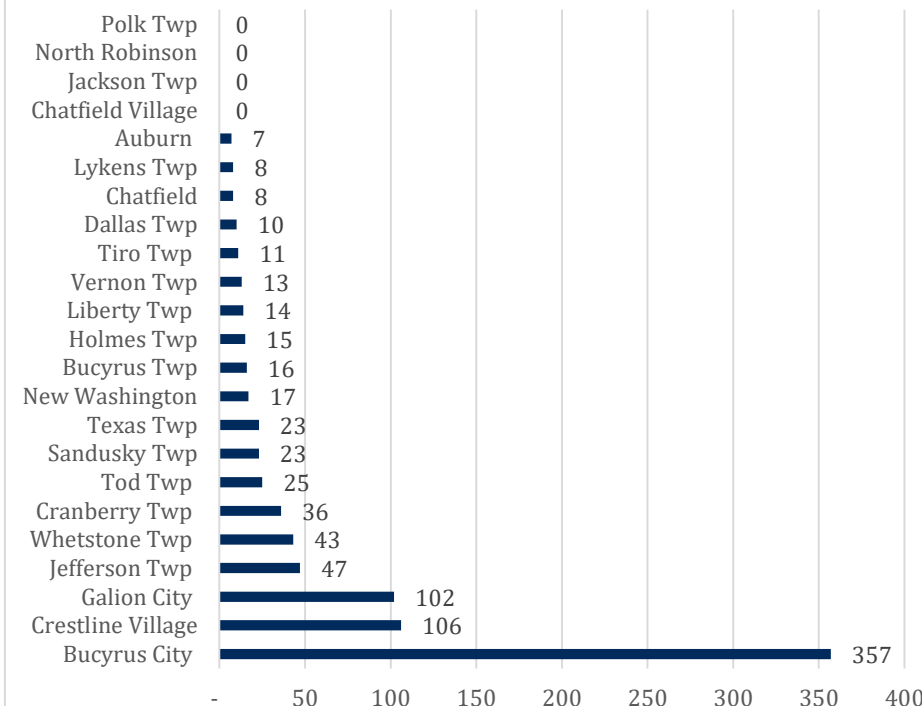
**122**

**Families Assisted on  
the Children with  
Medical Handicaps  
Program**

**16,450**

**Nursing Contacts  
with Students at the  
Schools**

### 2017 CMH Contacts by Place of Residence

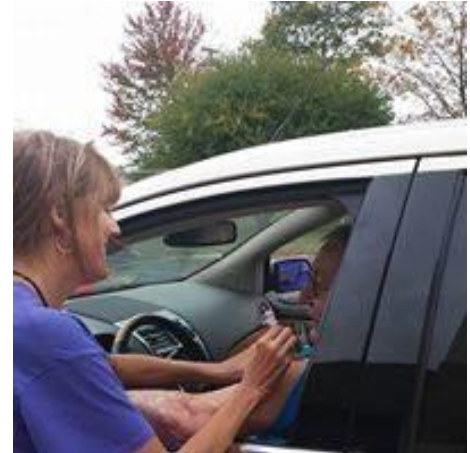


# IMMUNIZATIONS

## Immunizations

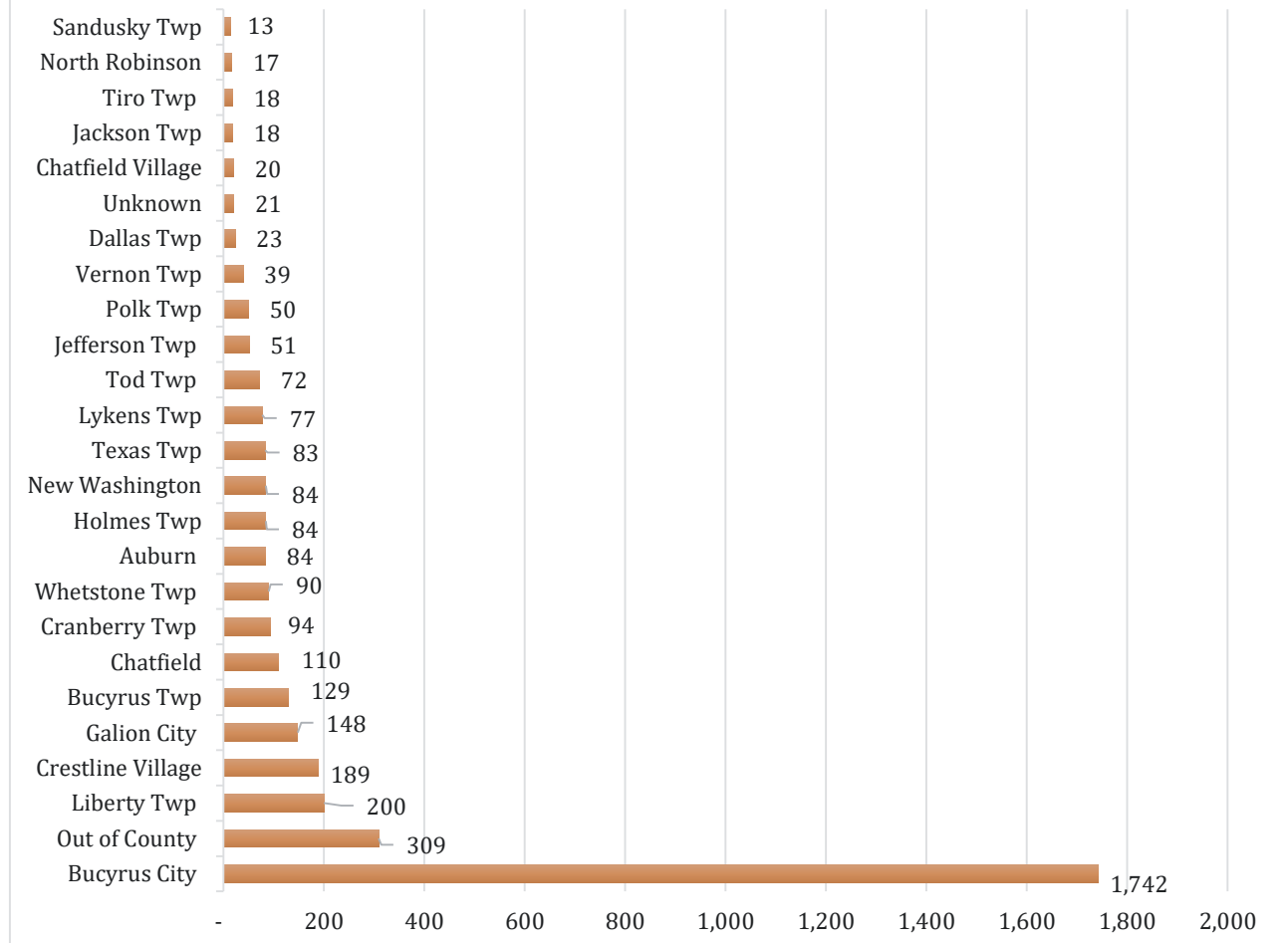
Crawford County Public Health focuses efforts and services to promote health and wellness along with the prevention of disease. A cornerstone of health and the prevention of disease is immunizations. CCPH is the area's largest provider of child and adult vaccines and we are also one of only a few providers of travel vaccines.

The immunization experts at CCPH provide the right vaccine at the right time and provide clients with important health and travel information.



Lisa Stine, RN, administering a vaccine during a drive-thru clinic.

### Number of Vaccines Given in 2017 by Place of Residence





# COMMUNICABLE DISEASE REPORT

## Communicable Disease Report

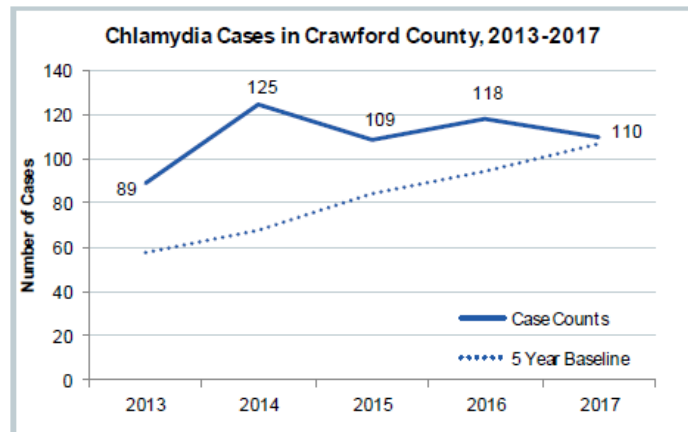
The Crawford County community saw a 4.4% increase in communicable disease cases from 2016 to 2017 (248 cases and 259 cases respectively). Numerous infectious diseases were reported during 2017; however, the most frequently reported illnesses were chlamydia (110 cases), Hepatitis C (52 cases), Influenza-associated hospitalization (37 cases), Hepatitis B (20 cases), and gonorrhea (14 cases).

| Table 1. Communicable Diseases Reported in Crawford County, 2017 |            |
|--|------------|
| Class B Reportable Diseases                                      |            |
| Anaplasmosis   | 1          |
| Campylobacteriosis   | 3          |
| Chlamydia infection  | 110        |
| Cryptosporidiosis  | 5          |
| <i>E. coli</i>   | 2          |
| Gonorrhea  | 14         |
| Hepatitis A  | 1          |
| Hepatitis B  | 20         |
| Hepatitis C  | 52         |
| Influenza-associated hospitalization                             | 37         |
| Legionnaires' Disease  | 1          |
| Lyme Disease   | 4          |
| Pertussis  | 2          |
| Salmonellosis  | 1          |
| <i>Streptococcus pneumoniae</i>                                  | 3          |
| Varicella  | 3          |
| <b>Total</b>   | <b>259</b> |
| Class C Reportable Diseases—Outbreaks                            |            |
| Norovirus  | 2          |
| Sapovirus  | 1          |
| <b>Total</b>   | <b>3</b>   |

# COMMUNICABLE DISEASE REPORT

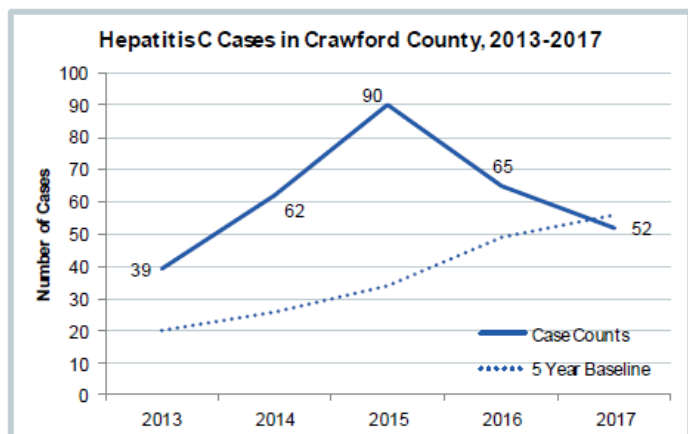
## Chlamydia

Number of Cases: 110  
 Average Age: 23.7 years  
 Median Age: 22 years  
 Age Range: 15-50 years  
 Female: 80.9%  
 Male: 19.1%  
 Decrease from 2016: 6.8%  
 Mode of Transmission: Sexually transmitted  
 Prevention: No vaccine is available



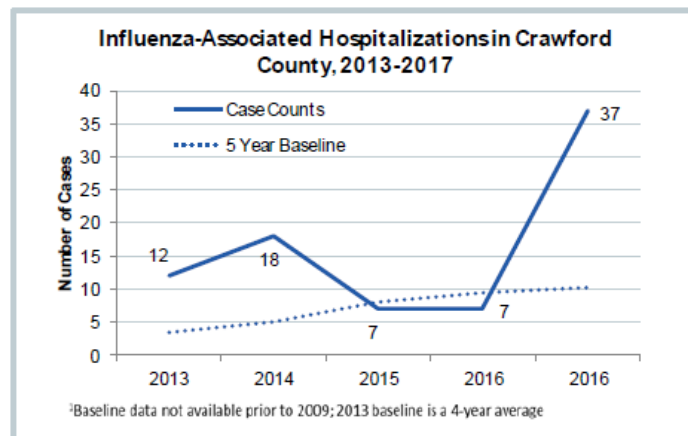
## Hepatitis C:

Number of Cases: 52  
 Average Age: 39.7 years  
 Median Age: 34 years  
 Age Range: 22-72 years  
 Female: 46.2%  
 Male: 53.8%  
 Decrease from 2016: 20.0%  
 Mode of Transmission: Injection drug use/  
 sharing of needles contaminated with  
 infected blood; contaminated tattooing  
 equipment; sexual transmission is rare  
 Prevention: No vaccine is available



## Influenza-Associated Hospitalizations:

Number of Cases: 37  
 Average Age: 64.9 years  
 Median Age: 69 years  
 Age Range: 6-92 years  
 Female: 62.2%  
 Male: 37.8%  
 Increase from 2016: 428.6%  
 Mode of Transmission: Direct person-to-  
 person contact through droplet spread with  
 nasopharyngeal secretions  
 Prevention: The best prevention is annual  
 vaccination; washing hands after sneezing,  
 coughing or using a tissue; cough into sleeve and not into hands



## Hepatitis B:

Number of Cases: 20  
 Average Age: 43.8 years  
 Median Age: 45.5 years  
 Age Range: 4days-63 years  
 Female: 50%  
 Male: 50%

Increase from 2016: 53.85%  
 Mode of Transmission: Injection drug use/  
 sharing of needles; contaminated tattooing  
 equipment; sexual contact; contamination  
 with body fluids other than saliva; perinatal  
 transmission  
 Prevention: The best prevention is vaccination

# VITAL STATISTICS

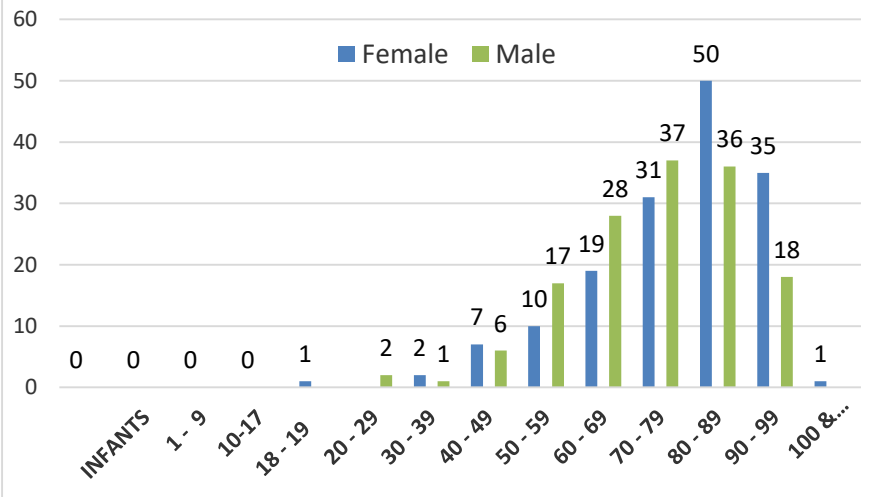
## Vital Statistics

There were 301 deaths in our jurisdiction in 2017 and the top causes of death were: Heart Disease, Cancer and Respiratory Failure.

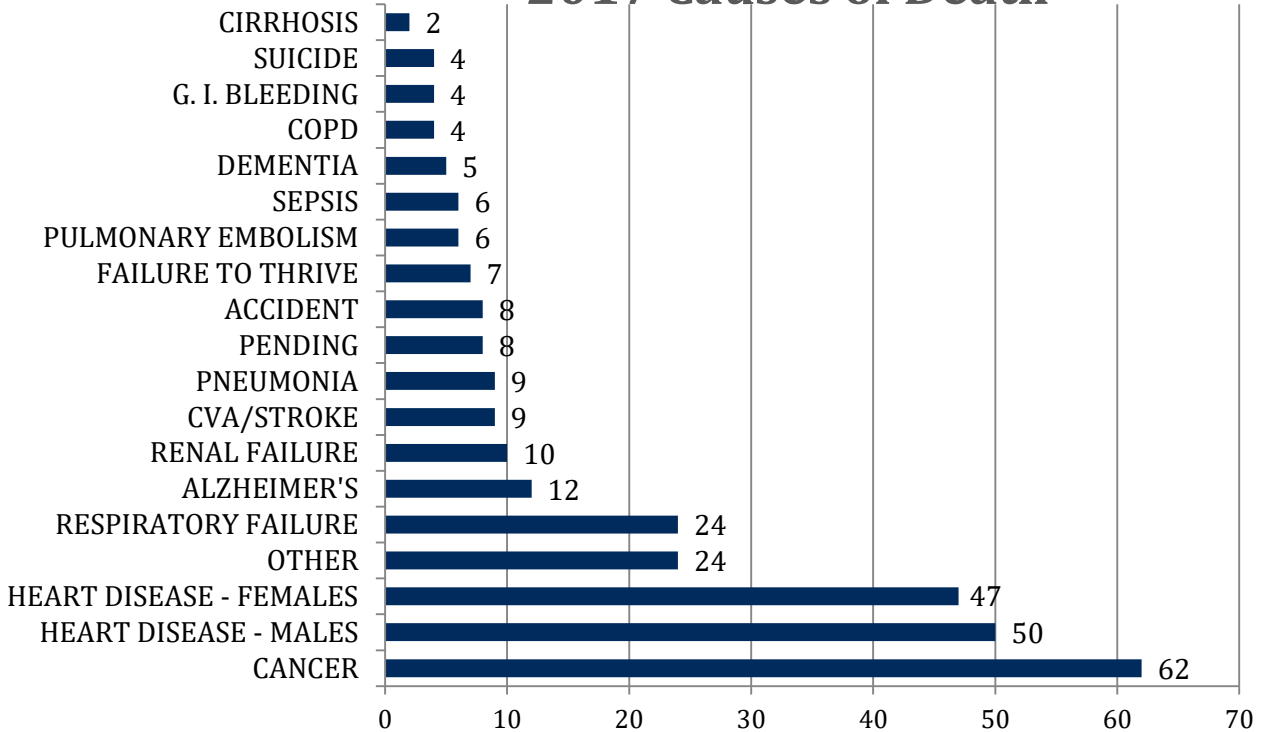
Our office issued a total of 227 Burial Permits, 1,036 Certified Copies of Death Certificates and 1,032 Certified Copies of Birth Certificates.

Our Vital Statistics records are for all of Crawford County excluding Galion City.

### Number of Deaths that occurred in Crawford County by Age Group



### 2017 Causes of Death



# PUBLIC HEALTH ACCREDITATION

## Public Health Accreditation

Recognizing the benefits of accreditation through PHAB (Public Health Accreditation Board), the 130th General Assembly in 2013 codified the authority for the Director of Health to require all local health districts to apply for accreditation through PHAB by July 1, 2018 and to become accredited by July 1, 2020. Requiring Ohio's local health districts to become accredited by PHAB will demonstrate that they are meeting or exceeding a common set of national standards; have the capacity to provide core public health services; and are continually striving to improve service, value, and accountability to stakeholders.

A condition of receiving any funding (subsidies or grants) from the Ohio Department of Health is to meet these PHAB deadlines. At the April 2017 Board of Health meeting, it was determined the need was justified to hire a full-time Accreditation Coordinator to assist us in meeting the mandatory July 2018 PHAB Accreditation application deadline. The position was posted, applicants were screened, a handful were interviewed, and we were pleased to find Jenny Klein joining our staff.



The goal for Crawford County Public Health is to apply for PHAB Accreditation Board) Accreditation by June 2018. Just a few of the required documents needed prior to applying for Accreditation include the Community Health Assessment (released in 2016), the Community Health Improvement Plan (released late 2016), the Strategic Plan, Workforce Development Plan, Quality Improvement Plan, Performance Management System, a Marketing Plan, and a Branding Strategy (all in progress).

Our first Accreditation All-Staff Meeting took place the beginning of August and recurs the first Tuesday of every month. This allows time for staff to share updates on documentation gathering, discuss any problems or concerns, and ask questions throughout our process in achieving accreditation. Individuals were divided into “Domain Teams”. These domains represent the 10 Essential Public Health Services, with the addition of governance and administrative services. Teams have been meeting once to twice per week to work on documentation selection and uploading.

During the month of November, our agency was awarded grant funding from OPHA (Ohio Public Health Association) and APHA (American Public Health Association). This grant supports accreditation readiness for local health departments and provides funding for a mentoring relationship for Accreditation Coordinators. Marion County Health Commissioner, Tom Quade was assigned to be our mentor. Prior to becoming the Marion County Health Commissioner, Tom was the Accreditation Coordinator at Summit County and facilitated their successful award of becoming PHAB accredited. We are excited to work with Tom and look forward to gaining invaluable knowledge from him.

# PUBLIC HEALTH ACCREDITATION



## Center for Public Health Practice

As we continue to work on PHAB document compliance, we were fortunate to have been chosen for three (3) no-cost training & technical assistance awards in 2017 all funded by the Ohio Department of Health to help us achieve our goal. These awards cover the cost of training and assistance from the Ohio State University College of Public Health to support us in completing prerequisite documents needed for demonstrating PHAB compliance. The projects supported by these awards include our Workforce Development Plan, our Strategic Plan and our Performance Management Plan.



Work continues with the Crawford County Health Partners on the four priorities identified in the Community Health Improvement Plan (CHIP): Reducing Adult Cardiovascular Disease, Reducing Obesity, Decreasing Youth Substance Abuse, and Improving Prenatal Outcomes. Avita Health System has graciously sponsored a website specific for activities that revolve around these priorities. The site can be viewed at: [www.crawfordcountyhealthpartners.org](http://www.crawfordcountyhealthpartners.org)

Here is a list of some of the activities completed by the group during the first year of working together on these four priorities:

- Avita added Veg-centric items as well as other fruit and vegetable items to their menu
- 12% of Avita food purchases are local
- All Avita vending machines have healthy choices available
- Patient brochures have been provided to Primary Care Physician offices on nutrition, exercise, and decreasing obesity risk factors
- Expansion of the Cooking Matters Program offered by OSU Extension and grocery store tours
- Began development of the PHIT America Mayor's Challenge (walking challenge)
- Avita built a bariatric program
- A lunch 'n learn session on Cardiovascular Health was provided
- Work with the schools has begun to explore adopting smoke-free policies
- Toxic Stress and Trauma Informed Care training was completed
- The Signs of Suicide (SOS) program in the schools has been expanded
- Operation Street Smart (drug awareness) training for the community was held
- The Leader in Me program in the schools was further supported
- The Pathways Model was explored
- Safe Sleep Awareness and information was distributed to all local physician offices
- Breastfeeding classes and support groups were expanded

# PUBLIC HEALTH EMERGENCY PREPAREDNESS

## Public Health Emergency Preparedness

### 2017 Public Health Emergency Preparedness (PHEP):

PHEP is the capability of the public health and health care systems, communities, and individuals, to prevent, protect against, quickly respond to, and recover from health emergencies, particularly those whose scale, timing, or unpredictability threatens to overwhelm routine operations.

- Since September 11, 2001, and the anthrax attacks that followed, a substantial federal investment—totaling in excess of \$5 billion—has been made to increase our nation’s ability to prepare for, and respond to, public health emergencies.
- PHEP is not a steady state; it requires continuous improvement, including frequent testing of plans through drills and exercises and the formulation and execution of corrective action plans.
- This program is supported through yearly grants- from the Centers for Disease Control and Prevention (CDC) through the Ohio Department of Health (ODH).

The CDC identified the following 15 public health preparedness capabilities (shown in their corresponding domains) as the basis for local public health preparedness:

- Biosurveillance
  - Laboratory Testing
  - Surveillance and Epidemiological Investigation
- Incident Management
  - Emergency Operations Coordination
- Community Resilience
  - Community Preparedness
  - Community Recovery
- Countermeasure and Mitigation
  - Medical Countermeasure Dispensing
  - Medical Materiel Management and Distribution
  - Non-Pharmaceutical Interventions
  - Responder Health and Safety
- Information Management
  - Emergency Public Information and Warning
  - Information Sharing
- Surge Management
  - Fatality Management
  - Mass Care
  - Medical Surge
  - Volunteer Management



# PUBLIC HEALTH EMERGENCY PREPAREDNESS



## EMERGENCY PREPAREDNESS The time to plan is now....

All emergency preparedness plans are undergoing a revision to become version 2.0. This version includes Galion City and aligns Crawford County plans with state expectations.

All plans are housed under one main plan called the Emergency Response Plan (ERP). This plan is currently about 600 pages and growing. The ERP contains 13 Annexes and many attachments, appendices, and standard operating procedures (SOPs).

During the month of July 2017, updates to the webpage were made to make accessing emergency preparedness information more user friendly and informative.



In response to the shootings in Orlando, FL in 2016, grants were established to provide tourniquet training in communities focused on areas where mass gatherings may occur (schools, churches, etc.). Our agency participated in this funding and established

three Stop the Bleed training sessions in 2017: March 6<sup>th</sup>, March 27<sup>th</sup>, and May 24<sup>th</sup>. Over 40 people attended to learn how to use a tourniquet and were all provided with a tourniquet to keep at their place of work or home. The trainings are free and we will be scheduling more classes in 2018.



# BOARD OF HEALTH

## Board of Health

Members of the Board of Health are appointed by the chairman of each township, mayors of each village (the members of the District Advisory Council (DAC)) and Bucyrus City. Licensing council, representatives involved in regulatory programs of the Environmental Health Division, appoints one member to represent their interests.

State law requires the board to report and take measures to control disease, enforce state public health laws and promote health and well-being within the department. The board is also responsible for the department's budget, hiring a health commissioner and/or the administrator, who serve as the executive officer of the department and is responsible for day-to-day activities.

### 2017 BOARD OF HEALTH MEMBERS

- Amanda Kovolyan, MD, Board President, DAC Appointed, Term Expires March 2019
- Bill Scott, DAC Appointed, Term Expires March 2020
- Dean Sipe, DAC Appointed, Term Expires March 2019
- Garnet “Sis” Love, Bucyrus City Rep. (January & February)
- Dan Wirebaugh, Bucyrus City Rep. (March – December)
- Phyllis Crall, Bucyrus City Rep.
- Scott Woodworth, Licensing Council Rep., Term Expires March 2022
- Zach Wolfe, DAC Appointed, Term Expires March 2021

### 2018 BOARD OF HEALTH MEETINGS

Unless otherwise noted, all meetings are scheduled for 4:30pm and held in the Conference Room at Crawford County Public Health, 1520 Isaac Beal Rd., Bucyrus, Ohio.

Wednesday, January 17, 2018

Wednesday, February 21, 2018

Tuesday, March 6, 2018 – District Advisory Council – 9:00am

Wednesday, March 21, 2018

Wednesday, April 18, 2018

Wednesday, May 16, 2018

Wednesday, June 20, 2018

Wednesday, August 15, 2018

Wednesday, September 19, 2018

Wednesday, October 17, 2018

Wednesday, December 5, 2018



# CCPH STAFF

## CCPH Staff

**Christopher Johnson, D.O.**

*Health Commissioner*

**Michael Johnson, M.D.**

*Medical Director*

### **ADMINISTRATIVE**

**Kate Siefert, RS**

*Administrator*

**Krista Whitmeyer**

*Director of Administrative Services*

**Barb Roberts**

*Deputy Director of Administrative Services/IT*

**Ginger George**

*Registrar/Billing Clerk*

### **HELP ME GROW**

**Pam Kalb, MSW**

*Help Me Grow Contract Manager*

**Cindy Engel, LSW**

*Service Coordinator*

**Dawn Stuckert, LSW**

*Home Visitor*

**Christy Holman, RSWA**

*Home Visitor*

**Andrea Kirgis, LSW**

*Central Coordination/Home Visitor*

**Mary Lear, RSWA**

*Family Support Home Visitor*

**Ashley Morey**

*Family Support Home Visitor*

### **WIC**

**Kathy Bushey**

*WIC Director*

**Monica Neidemeirer, RDLD, CLC**

*WIC Nutritionist*

**Mary Coleman, RDLD**

*WIC Nutritionist*

**Vicki Hartschuh**

*WIC Clerk*

**Dixie Long**

*WIC Clerk*

**Kay Whitmeyer (Jan-Oct)**

*WIC Clerk*

**Jill Stoffer (Nov-Dec)**

*WIC Clerk*

**Deanna Grube, IBCLC**

*WIC Lactation Consultant*

**Holly Kozinski**

*WIC Breastfeeding Peer Helper*

### **ENVIRONMENTAL HEALTH**

**Steve Jozwiak, RS**

*Director of Environmental Health*

**Michael Graves, RS**

*Staff Sanitarian*

**Blythe Buurma, RS**

*Emergency Preparedness Planner/Staff Sanitarian*

**Jenny Klein, SIT**

*Accreditation*

*Coordinator/Staff Sanitarian*

### **PUBLIC HEALTH NURSING**

**Amy Ramirez, RN**

*Director of Nursing*

**Rae Johnson, RN**

*Public Health Nurse*

**Lisa Stine, RN**

*Public Health Nurse*

**Erin Barnett, RN**

*Public Health Nurse*

**Debbie Schultz, RN**

*Public Health School Nurse (Bucyrus City)*

**Cassie Powers, RN**

*Public Health School Nurse (Buckeye Central)*

**Whitney Long, RN**

*Public Health School Nurse (Colonel Crawford)*

**Beth Hiler, RN**

*Public Health School Nurse (Crestline)*

**Crystal Marks, RN**

*Public Health School Nurse (Wynford)*

**Kara Kimerline, RN**

*Public Health School Nurse (Crestline)*



## HOURS OF SERVICE:

Regular Hours (Open to the Public):

Monday through Friday: 8:00am – 4:30pm

### Clinics

Vaccination Clinics Every Thursday:

2<sup>nd</sup> & 3<sup>rd</sup> Thursdays - 9:00-11:30am & 3:00-6:30pm

All other Thursdays - 9:00-11:30am & 1:00-4:00pm

New Washington Clinic - Every 3<sup>rd</sup> Wednesday - 9:00-11:30am

HIV/STD Testing – by appointment

### WIC Clinics:

#### **BUCYRUS (1520 Isaac Beal Rd.)**

2<sup>nd</sup>, 3<sup>rd</sup> & 4<sup>th</sup> Tuesdays - 8:00am – 5:00pm

1<sup>st</sup>, 3<sup>rd</sup> & 4<sup>th</sup> Thursdays - 8:00am – 5:00pm

2<sup>nd</sup> Thursday - 9:30am – 6:30pm

2<sup>nd</sup> Friday - 8:00am – 5:00pm

#### **GALION (First United Church of Christ – 248 Harding Way W.)**

1<sup>st</sup> Tuesday 9:30am – 6:30pm

Every Wednesday 8:00am – 5:00pm

1<sup>st</sup>, 3<sup>rd</sup> & 4<sup>th</sup> Friday 8:00am – 5:00pm

#### **CRESTLINE (Calvary United Church of Christ – 511 Heiser Ct.)**

1<sup>st</sup> Monday 8:00am – 5:00pm

3<sup>rd</sup> Monday 9:30am – 6:30pm

## CONTACT US:

Nursing Division: (419)562-5871  
ext. 1209

Environmental Health:  
(419)562-5871 ext. 1203

Vital Statistics: (419)562-5871  
ext. 1201

WIC Bucyrus: (419)562-5859

WIC Galion: (419)462-1197

WIC Crestline: (419)683-2921

Help Me Grow: (419)562-4667  
option 6

Emergency Preparedness:  
(419)562-5871 ext. 1207

Administrator: (419)562-5871  
ext. 1213

Website:  
[www.crawfordhealth.org](http://www.crawfordhealth.org)

Email: [cchd@crawford-co.org](mailto:cchd@crawford-co.org)

